

Assembly Directions for Cupholder

#PVCH0000



Tools Needed

#2 Square Drive Bit (Not Included)

Step #1: Place cupholder at the flattest part of the arm and hold in place (see images below for suggested placement)

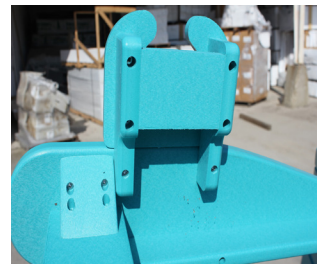
Step#2: Using your drill and #2 Square Drive Bit, drive the screws into the bottom of the arm(pre-drilling is not required)



Dining Arm



Glider&Chaise Arm



Adirondack Arm

CAUTION-DO NOT OVERTIGHTEN